

3M™ Petrifilm™ Plate Manager 3.1.1 Upgrade/Installation Instructions

This document is a supplement to the 3M™ Petrifilm™ Plate Reader Advanced and 3M™ Petrifilm™ Plate Manager User Manual. This supplement contains instructions for upgrading or installing the 3M Petrifilm Plate Manager software to version 3.1.1.

Minimum Computer/Server Requirements

- Body Microsoft .NET Framework 4.5 or above (Installer)
- Device Drivers – For connectivity with the 3M Petrifilm Plate Reader Advanced (LibUsb installer)
- Visual C++ Redistributable (64-bit) - vc_redist_x64.exe (version 10.0.30319.1) (Installer)
- Intel-Core-i3 @ 1.80GHz Processor, Windows 8, Windows 8.1 or Windows 10 32/64 bit Intel based processors with minimum 4 GB of available RAM

How to Access Software Download

Use the link below to access the software download page

https://www.3m.com/3M/en_US/food-safety-us/support/package-inserts/software-download/

[3M™ Petrifilm™ Plate Manager Software Version 3.1.1 \(EXE, 472 MB\)](#)

3M Petrifilm Plate Reader Advanced system documents



[3M™ Petrifilm™ Plate Manager Software Version 3.1.1 \(EXE, 472 MB\)](#)

[User Manual Supplement for Software v3.1.1.pdf \(PDF, 1.05 MB\)](#)

Features include:

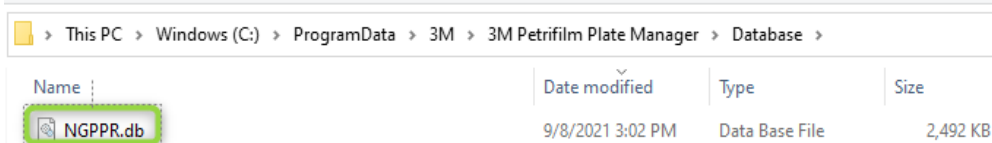
- Mapping feature added for copy to Excel and the ability to send results to an existing Excel file
- Users will have the option to select all results across multiple pages based on filtering/search criteria
- Remote users can now access multiple local Petrifilm Plate Manager installations
- Uncompleted worklists can now be moved to the completed section
- Option to eliminate the estimated sign (-) and eliminate the liquifier percentage from exported results
- Customization of the image auto naming convention
- New data column added for the log calculated result

Upgrade Instructions

The upgrade process is programmed to back up the database prior to performing the upgrade but it is still strongly recommended to conduct a manual backup of the database prior to performing an upgrade.

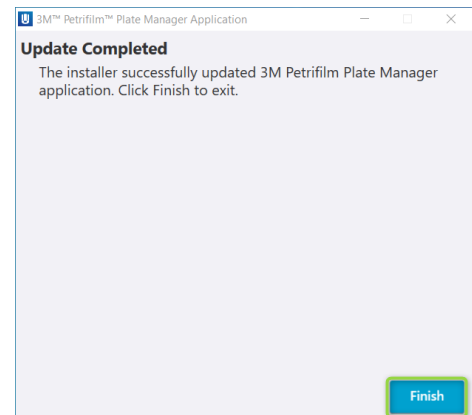
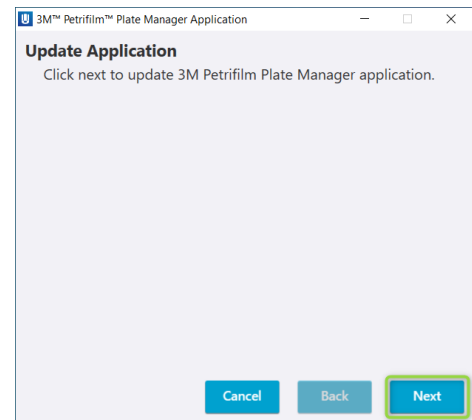
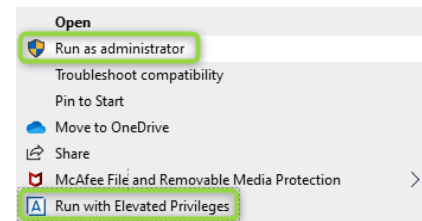
Manual Backup of the database

1. Open File Explorer window and navigate to the following path: C:\ProgramData\3M\3M Petrifilm Plate Manager\Database
2. Copy the “NGPPR.db” file and paste it to another folder on your desktop or network. If anything should happen during the upgrade process this file can be used to restore your data.



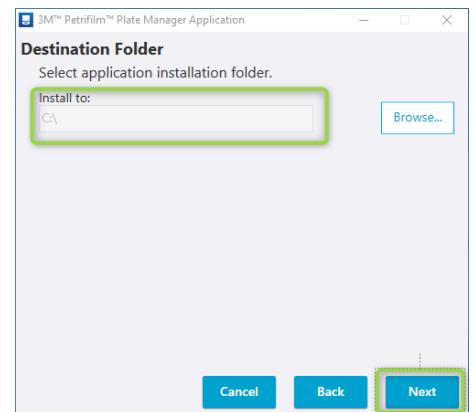
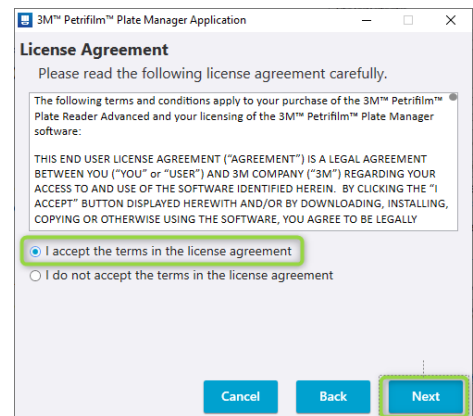
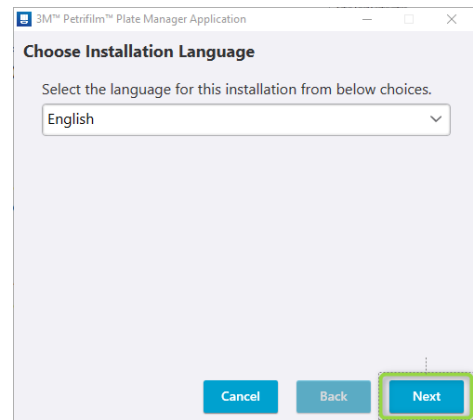
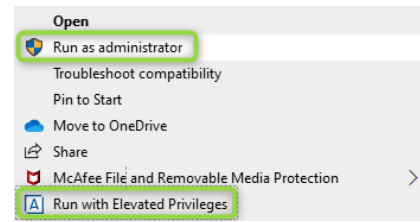
Upgrading from version 3.0.1 or 3.0.3 to 3.1.1 of the 3M™ Petrifilm™ Plate Manager software

1. Locate the MMM_FSD_NGPPR_Setup Ver 3.1.1.exe file that was downloaded. Right-click on the file and select “Run as administrator” or “Run with Elevated Privileges.”
2. Select “Next” to proceed to update the application to version 3.1.1. By default, a backup of your database will occur upon clicking “Next.”
3. When the update is complete, select “Finish.” After selecting “Finish,” the window will close and the application will not launch by default.

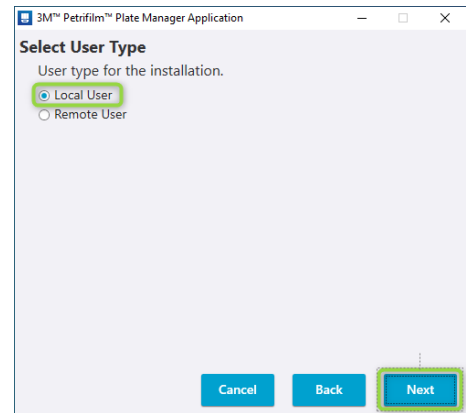


Upgrading from version 1.0.5.1, 1.0.5.2, 1.1.0.0 or 2.0.1 to 3.1.1 of the 3M™ Petrifilm™ Plate Manager software

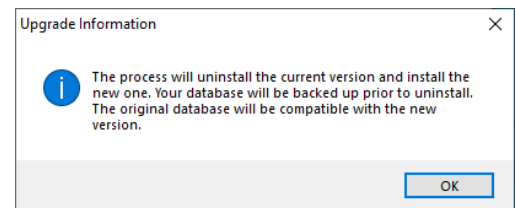
1. Locate the MMM_FSD_NGPPR_Setup Ver 3.1.1.exe file that was downloaded. Right-click on the file and select “Run as administrator” or “Run with Elevated Privileges.”
2. The Choose Installation Language window will appear. Select the preferred install language from the drop-down menu and select “Next”.
3. Read the licensee agreement and select “I accept the terms in the license agreement” if you want to proceed with the installation. Then select “Next.”
4. Select the path at which you would like to install the software. It is strongly recommended to install at the default location for the best performance. To install at the default location, select “Next.”



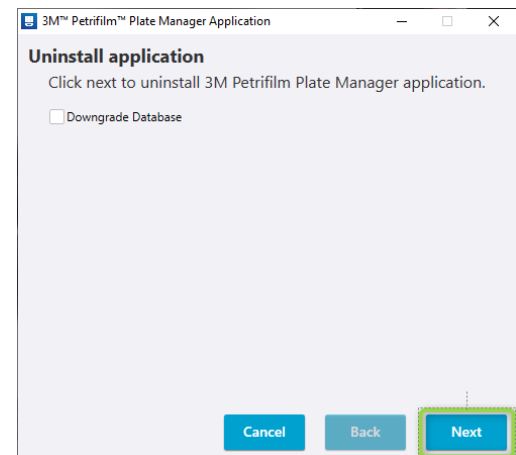
5. Select “Local User” if it is your intention to use the software with the 3M™ Petrifilm™ Plate Reader Advanced device. Select “Next” to proceed. For remote installations please refer to the [3M™ Petrifilm™ Plate Manager User Manual](#) for instructions.



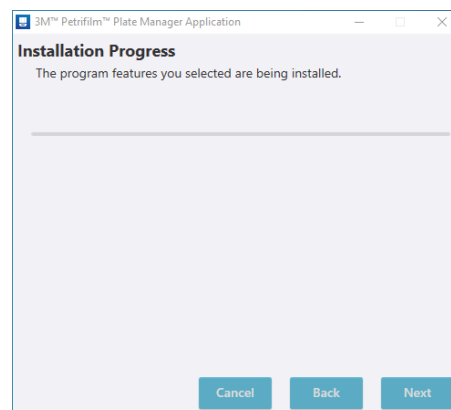
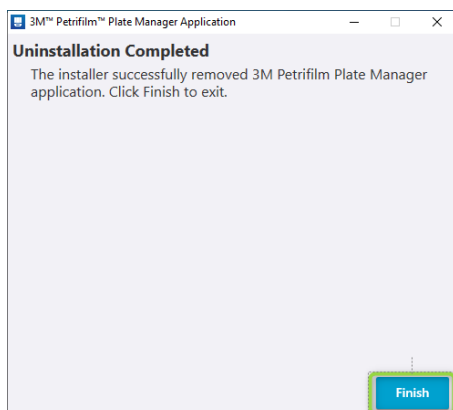
6. The process will proceed to uninstall the current version and install the latest version. Prior to this occurring, the software will back up your current database. Your current database will be compatible with the new version installed.



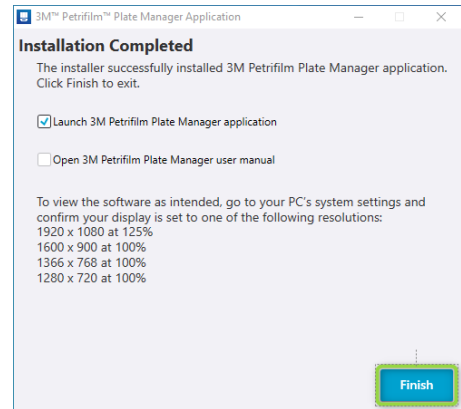
7. By default, the downgrade database is unselected. Select the “Next” button to proceed with the uninstallation.



8. Select “Finish” and it will proceed to the next screen that will install the latest version 3.1.1.



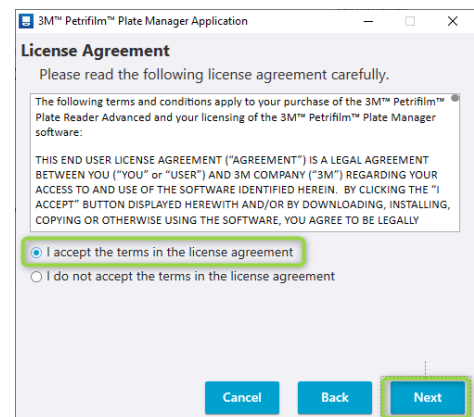
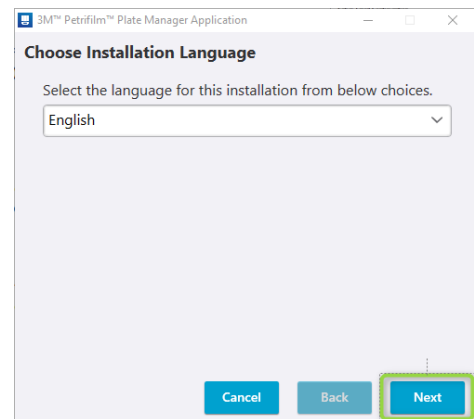
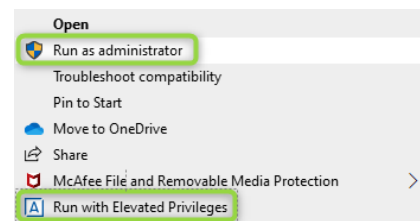
- The installation is now complete and by default, the checkbox “Launch 3M™ Petrifilm™ Plate Manager application” will be selected. Upon clicking “Finish” the application will launch.



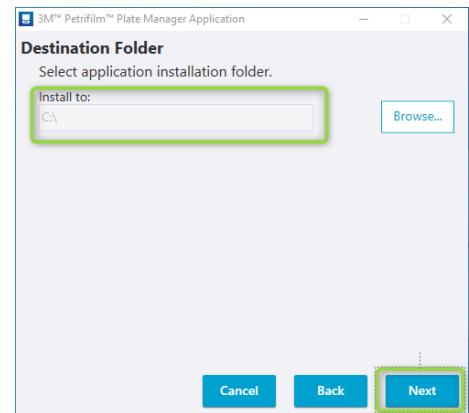
- Once the 3M™ Petrifilm™ Plate Reader Advanced is connected to the PC, the device will restart, up to two times, to load the new firmware.

First-Time Installation Instructions

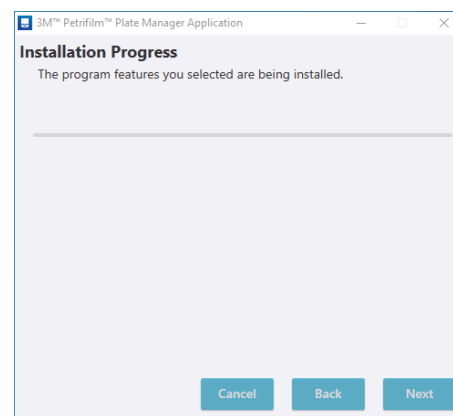
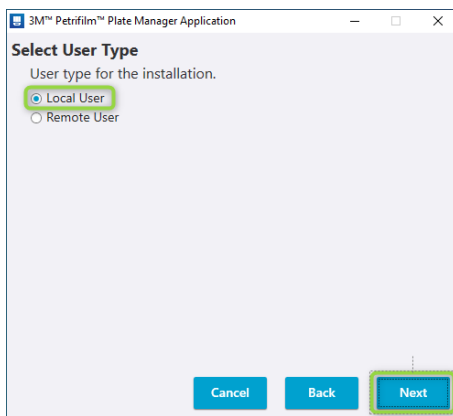
- Locate the MMM_FSD_NGPPR_Setup Ver 3.1.1.exe file that was downloaded. Right-click on the file and select “Run as administrator” or “Run with Elevated Privileges.”
- The Choose Installation Language window will appear. Select the preferred install language from the drop-down menu and select “Next.”
- Read the licensee agreement and select “I accept the terms in the license agreement” if you want to proceed with the installation. Then select “Next.”



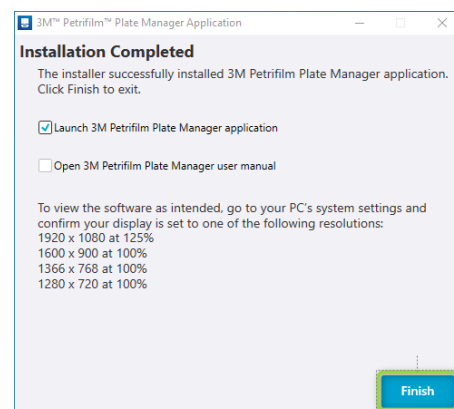
4. Select the path at which you would like to install the software. It is strongly recommended to install at the default location for best performance. To install at the default location, select “Next.”



5. Select “Local User” if it is your intention to use the software with the 3M™ Petrifilm™ Plate Reader Advanced device. For remote installations, please refer to the [3M™ Petrifilm™ Plate Manager User Manual](#) for instructions. Select “Next” to proceed. An installation loading bar will appear; the time of the installation will vary depending on the PC.



6. The installation is now complete and by default, the checkbox “Launch 3M Petrifilm Plate Manager application” will be selected. Upon clicking “Finish” the application will launch.



7. Once the 3M Petrifilm Plate Reader Advanced is connected to the PC, the device may restart, up to two times, to load the correct firmware.

3M™ Petrifilm™ Plate Manager 3.1.1 Software Updates

Selecting all results across multiple pages

Users now have the ability to select all results across all pages based on filtering or search criteria.

<input checked="" type="checkbox"/>	1264	AC	1:10	97	97	User	<input type="checkbox"/>	970	35C
<input checked="" type="checkbox"/>	1263	AC	1:1000	96	96	User	<input type="checkbox"/>	96000	35C
<input checked="" type="checkbox"/>	1262	AC	1:100	95	95	User	<input type="checkbox"/>	9500	35C

Check results across all pages Results per page: 30 1-30 of 45 < >

Remote access to multiple local 3M Petrifilm Plate Manager installations

In previous versions of the software remote users were only able to establish a connection with a single local installation. Users now have the ability to link their remote installation to multiple different local installations of the 3M Petrifilm Plate Manager. Remote users will be able to switch between which local installations' data they are looking at by navigating to the settings section.

Import Package File

Laboratory Location Name

Enter token password

Choose authentication package file path

Option to mark worklists as completed

Worklists that have at least one plate executed in them are now able to be marked as complete by hovering over the worklist and selecting the ellipses.

In Progress			
Name	Progress	Created On	Scheduled For
● Worklist	<div style="width: 4%;"><div style="width: 4%;"></div></div> 4%	05/24/2023 10:04:57 AM	No Date

Delete

Copy

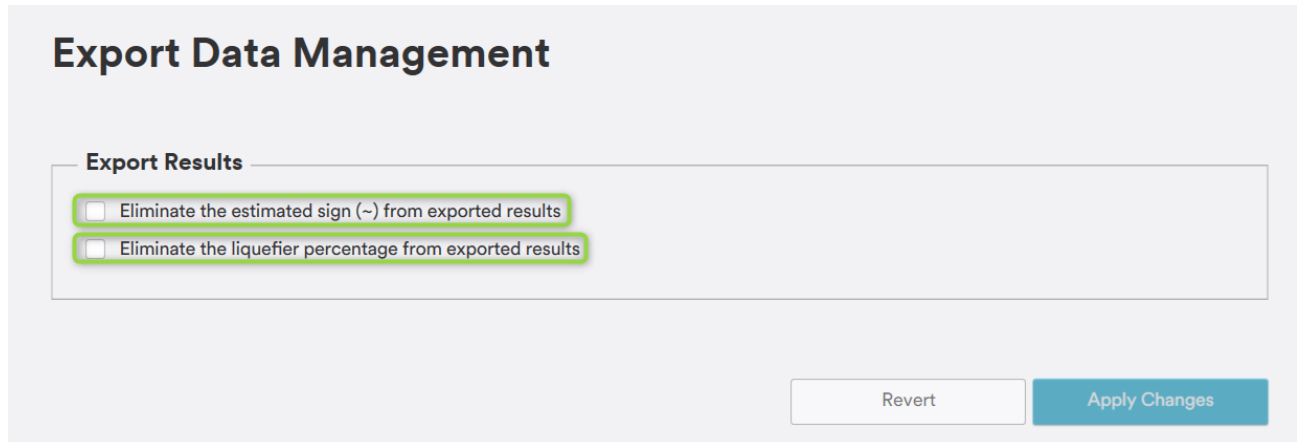
Edit

Pause

Not Started			
-------------	--	--	--

Export data management added to settings

Under export data management in the settings section, users can choose to remove the estimated sign (~) and the liquefier percentage from exported results, via the results window. When using the copy to excel function on the enumerate window, both of these are removed by default.



Export Data Management

Export Results

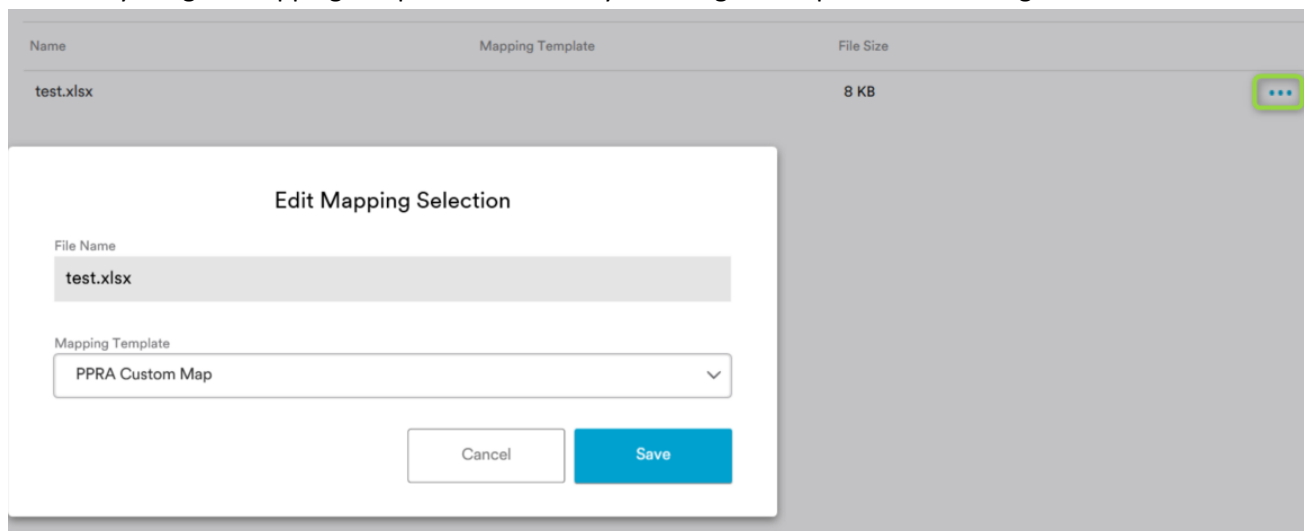
- Eliminate the estimated sign (~) from exported results
- Eliminate the liquefier percentage from exported results

Revert Apply Changes

Copy to Excel data mapping

Save to existing file – Users can save a blank Excel file to a destination of their choosing. Once the file has been saved, users may select that file by selecting “Choose File.”

Users may assign a mapping template to the file by selecting the ellipses and selecting “edit”.



Name	Mapping Template	File Size
test.xlsx		8 KB

Edit Mapping Selection

File Name
test.xlsx

Mapping Template
PPRA Custom Map

Cancel Save

Customize Data Mapping – Users can create mapping templates so they can assign each data field within the application to a specific column in an Excel document.

Select a mapping template

Mapping Template
 PPRA Custom Map

+ Add Template

AC	PPRA Custom Map	Separate sheets
	Data Type	Excel Column
CC	Technician	A
LAB	Sample ID	B
RCC	Image Date Time	C
RYM	Plate Type	D
STX	Dilution	E
EC/CC	Barcode Text	F
EB	Comments	G
RAC	Colonies Raw Count	H
REC	Colonies Edited Count	I
SEC	Colonies Calculated Result	J
STXD	Colonies Log Calculated Result	K

Adding a Template – When adding a template users have the option to have all plates saved on a single sheet within an Excel document or to have them saved on a separate sheet within the document. When utilizing the same sheet for all plates users will be notified if a column has already been assigned to a different plate type.

Add Template

Template Name
 Test

Choose the spreadsheet layout

Each plate type on a separate sheet (tab)
 All plate types on one sheet

Cancel Add Template

Customization of the image auto-naming convention

Users now have the option to specify the naming convention for saved images. The order in which the options are selected is the order in which they will appear in the saved file name. Note that the data and time field is mandatory.

Auto-Save Images

Automatically save plate images

Image without annotations

Image with system annotations

Image with system and user annotations

Select options to generate image filename

Plate Type, Sample ID, Dilution, Date & Time

Note: The order in which options are selected in above combobox represent the order in which they would appear in the image file name with Date & Time as mandatory field.

Image filename will be in the format: Plate Type_Plate_Sample ID_Dilution_Date & Time

New data column added for the log-calculated result

Users now have the option to view the log-calculated result in the results section.

Sample ID	Plate Type	Dilution	Raw Total Count	Edited Total Count	Enumerated by	Plate Image	Calculated Result	Log Calculated Result
1234	AC	1:10	15	15	User		150	2.176
1237	AC	1:10	18	18	User		180	2.255
1240	AC	1:10	21	21	User		210	2.322



3M Food Safety
3M Center
Building 275-5W-05
St. Paul, MN 55144-1000 USA

1-800-328-6553
www.3M.com/foodsafety

3M and Petrifilm are trademarks of 3M.
Used under license in Canada. Please recycle.
Printed in U.S.A. © 3M 2023. All rights reserved.

TB Number 947171

Page 10 of 10